

Why BROXO® is your best choice

- ✓ Sourced from otherwise untouched ancient subterranean salt beds
- ✓ Refined to the highest purity levels of 99.9% sodium chloride
- ✓ Compacted under extreme pressure for highest product density and best possible product performance
- ✓ Tailor-made for every water-softening application, whether commercial or domestic
- ✓ Perfectly free flowing

Norms and standards

- ISO 9001-certified
- HACCP-compliant
- SMETA-certified
- In compliance with Art. 11 of the Biocidal Products Directive (98/8/EC)
- 99.9% NaCl
- EN973 Type A
- EN 14805 Type 2
- EN 16401 Grade A and B

6-15mm



1-6mm



Tablets



These salts are available as follows:

PRODUCT	TYPE	PACK SIZES
BROXO® 1-6mm	Compacted salt	1 ton
BROXO® 6-15mm	Compacted salt	10, 25 kg
BROXO® Tablets	Tablets	10, 15, 25 kg

Premium regeneration salts for water softening

- + 100% Soluble salt
- + The Best quality due to high pressure technology
- + The right product for every type of installation
- + Contributes to environmental sustainability

Sustainable Salt

Reducing our electrical energy requirement through steam.

- Majority of our steam for salt production comes from burning bio-mass or waste.
- In The Netherlands, we have reduced our carbon footprint with 50,000 tons per year.
- Residual heat is used for nearby houses and businesses.



All of our BROXO® products meet the EN 973 Type A Industrial Standard for Regeneration Salt, indicating that our production processes and our packaging fulfil all necessary hygiene requirements.

Say Hello



Hengelo Salt Specialties

Tel: +31 (0)88 96 91 966

Tel: +31 (0)88 96 91 726

www.broxosalt.com

Visit our website broxosalt.com

We have been in the salt business since 1918. Today, we're proud to offer our unique BROXO® regeneration salts, pure salt products delivering outstanding results across all types of water softening systems. From large-scale industrial and municipal installations to domestic water softening.



Softening water it saves time, money and equipment

- Water contains varying concentrations of calcium and magnesium ions.
- The higher the concentrations, the harder the water.
- Hard water leads to lime scale build-up, also known as scaling, inside appliances, tanks and pipes.



Industrial and commercial hard water leads to:

- Higher energy costs
- Higher maintenance and replacement costs
- Loss of systems efficiency and performance



In households, hard water leads to:

- Scaling and poor performance in water heating equipment, from boilers to kettles
- Clogging in household pipes, taps and showerheads, which can lead to serious plumbing problems
- Unsightly lime scale on bathtubs, shower stalls, kitchenware and crockery, often requiring extra cleaning with specialist products
- Reduced cleaning power for all soaps and detergents, including dishwasher soaps and laundry detergents
- Soft water feels softer and reduces irritation on skin

Our solution

A good water softening system can help prevent all of these problems

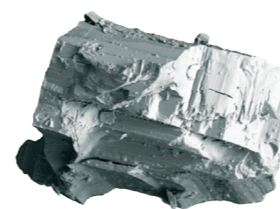
For a water softening system to perform at peak levels, it needs high quality regeneration salts. Our BROXO® line is the highest quality available and has been developed in close cooperation with producers and suppliers of industrial and domestic water softening systems for optimum performance.

The efficiency of the water softening system depends on the quality of the salt

Sea salt and rock salt contain impurities of their own which may not only hamper ion exchange but also affect the overall purity of the softened water. That is why BROXO® products are produced from vacuum salt, with the highest purity.

High quality vacuum salt perfect for compacting

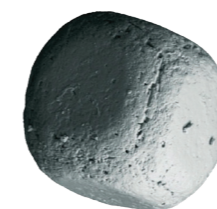
It starts with good uniform crystals, to make the best



Rock Salt
90-99% NaCl

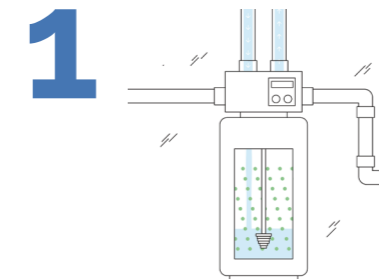


Sea Salt
90-98% NaCl

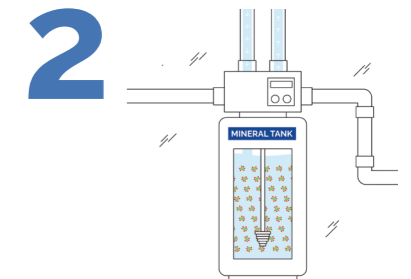


Vacuum Salt
>99% NaCl

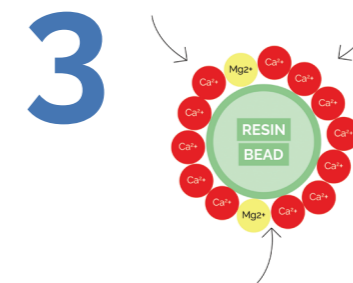
How do water softeners work?



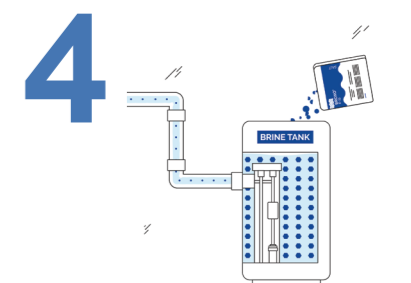
1 Hard water including calcium Ca^{+} and magnesium Mg^{2+} goes into the water softener



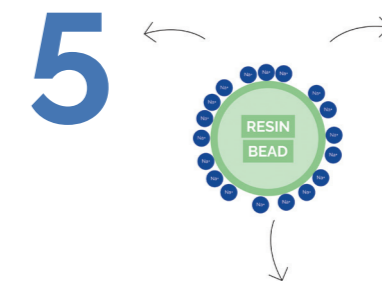
2 The heart of a water softener is the ion exchange unit. It's filled with small negatively loaded resin beads



3 The principle in the mineral tank is ion exchange and the Ca^{+} and Mg^{2+} is attaching themselves to the negative ions in the tank



4 When the beads become nearly saturated with calcium and magnesium ions they lose effectiveness and need to be recharged with BROXO Salt.



5 Therefore the ion exchange resin is flushed with a sodium chloride solution and thereby regenerated